

Anti-Mono-Methyl-NONO-R357/R365 antibody (STJ110387)

STJ110387

GENERAL INFORMATION

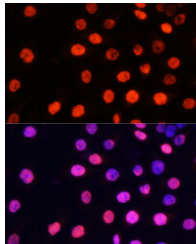
Product Type	Primary antibodies
Short Description	
Applications	WB/IF/ICC/ELISA
Host/Source	Rabbit
Reactivity	Human/Rat

PRODUCT PROPERTIES

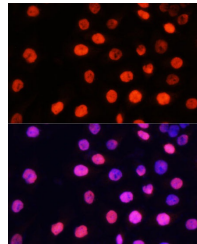
Clonality	Polyclonal
Clone ID	
Concentration	Lot specific
Conjugation	Unconjugated
Purification	Affinity purification
Dilution Range	WB:1:500-1:2000 IF/ICC:1:50-1:100 ELISA:Recommended starting concentration is 1 μ g/mL. Please optimize the concentration based on your specific assay requirements.
Formulation	PBS with 0.02% Sodium Azide, 50% Glycerol, pH 7.3.
Isotype	IgG
Storage Instruction	Store at -20°C for up to 1 year from the date of receipt, and avoid repeat freeze-thaw cycles.

TARGET INFORMATION

Gene ID	4841
Gene Symbol	NONO
Uniprot ID	NONO_HUMAN
Immunogen	RQQEEMMRR
Immunogen Region	
Specificity	A synthetic monomethylated peptide around R357 & R365 of human NONO/p54nrb (Q15233).
Immunogen Sequence	RQQEEMMRR



Immunofluorescence analysis of HeLa cells using MonoMethyl-NONO-R357/R365 polyclonal antibody (STJ110387) at dilution of 1:100 (40x lens). Blue: DAPI for nuclear staining.



Immunofluorescence analysis of HeLa cells using MonoMethyl-NONO/p54nrb-R357/R365 polyclonal antibody (STJ110387) at dilution of 1:100 (40x lens). Blue: DAPI for nuclear staining.

This product is suitable for in-vitro studies under the RESEARCH USE ONLY [RUO] licence. This product must not be used as for diagnostic or other medical purposes.
St John's Laboratory Ltd, Knowledge Dock Business Centre, University Way, London, E16 2RD | Tel: 0208 223 3081