

Anti-CPS1 antibody (750-970) (STJ110382)
STJ110382

GENERAL INFORMATION

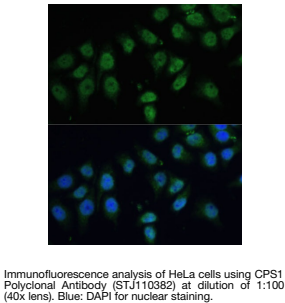
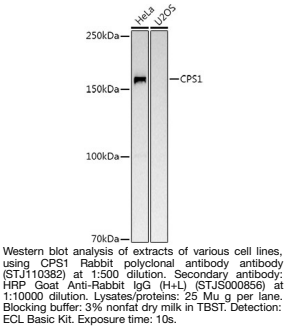
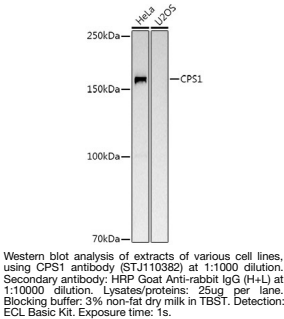
Product Type	Primary antibodies
Short Description	
Applications	WB/IF/ICC/ELISA
Host/Source	Rabbit
Reactivity	Human/Mouse/Rat

PRODUCT PROPERTIES

Clonality	Polyclonal
Clone ID	
Concentration	Lot specific
Conjugation	Unconjugated
Purification	Affinity purification
Dilution	WB:1:500-1:1000
Range	IF/CC:1:50-1:200 ELISA:Recommended starting concentration is 1 Mu g/mL. Please optimize the concentration based on your specific assay requirements.
Formulation	PBS with 0.05% Proclin300, 50% Glycerol, pH 7.3.
Isotype	IgG
Storage Instruction	Store at -20°C for up to 1 year from the date of receipt, and avoid repeat freeze-thaw cycles.

TARGET INFORMATION

Gene ID	1373
Gene Symbol	CPS1
Uniprot ID	CPSM_HUMAN
Immunogen	
Immunogen Region	750-970
Specificity	Recombinant fusion protein containing a sequence corresponding to amino acids 750-970 of human CPS1 (NP_001866.2).
Immunogen Sequence	IKNVVSGKTSACFEPSLDYM VTKIPRWDLDRFHTSSRIG SSMKSVGEVMAIGRTFEESF QKALRMCHPSIEGFTPLPM NKEWPSNLDLRKELSEPSST RIYAIKAIDDNMSLDEIEK LTYIDKWFLYKMRDILNMEK TLKGLNSESMTTEETLKRAKE IGFSDKQISKCLGLTEAQT R ELRLKKNIHPWWKQIDTLAA EYPSVTNYLYVTYNGQEHVD N



This product is suitable for in-vitro studies under the RESEARCH USE ONLY [RUO] licence. This product must not be used as for diagnostic or other medical purposes.
St John's Laboratory Ltd, Knowledge Dock Business Centre, University Way, London, E16 2RD | Tel: 0208 223 3081