

Anti-RDH5 antibody (24-318) (STJ110358)

STJ110358

GENERAL INFORMATION

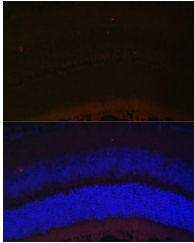
Product Type	Primary antibodies
Short Description	
Applications	WB/IHC-P/IF/ICC/ELISA
Host/Source	Rabbit
Reactivity	Human/Mouse/Rat

PRODUCT PROPERTIES

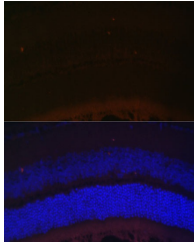
Clonality	Polyclonal
Clone ID	
Concentration	Lot specific
Conjugation	Unconjugated
Purification	Affinity purification
Dilution	WB:1:500-1:2000
Range	IHC-P:1:50-1:100 IF/ICC:1:50-1:100 ELISA:Recommended starting concentration is 1 μ g/mL. Please optimize the concentration based on your specific assay requirements.
Formulation	PBS with 0.02% Sodium Azide, 50% Glycerol, pH 7.3.
Isotype	IgG
Storage	Store at -20°C for up to 1 year from the date of receipt, and avoid repeat freeze-thaw cycles.
Instruction	

TARGET INFORMATION

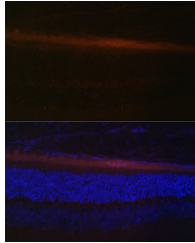
Gene ID	5959
Gene Symbol	RDH5
Uniprot ID	RDH5_HUMAN
Immunogen	
Immunogen Region	24-318
Specificity	Recombinant fusion protein containing a sequence corresponding to amino acids 24-318 of human RDH5 (NP_002896.2).
Immunogen Sequence	LPASNAFVFITGCDSGFGRL LALQLDQRGFRVLASCLTPS GAEDLQRVASSRLHTLLDI TDPQSVQQAQWVEMHVKEA GLFGLVNNAGVAGIIGTPW LTRDDFQRVLVNNTMGPIGV TLALLPLLQQAQGRVINITS VLGRLAANGGGYCVSKFGLE AFSDSLRRDVAHFGIRVSIV EPGFFRTPVTNLESLEKTLQ ACWARLPATQAHYGGGAFLT KYLKMQRIMNLICDPDLT



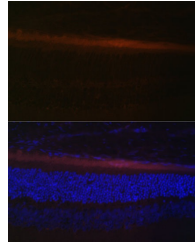
Western blot analysis of extracts of various cell lines, using RDH5 antibody (STJ110358) at 1:10000 dilution. Secondary antibody: HRP Goat Anti-rabbit IgG (H+L) at 1:10000 dilution. Lysates/proteins: 25ug per lane. Blocking buffer: 3% non-fat dry milk in TBST. Detection: ECL Enhanced Kit. Exposure time: 90s.



Immunofluorescence analysis of mouse retina using RDH5 Polyclonal Antibody (STJ110358) at dilution of 1:100 (40x lens). Blue: DAPI for nuclear staining.



Immunofluorescence analysis of rat retina using RDH5 Polyclonal Antibody (STJ110358) at dilution of 1:100 (40x lens). Blue: DAPI for nuclear staining.



Immunofluorescence analysis of rat retina using RDH5 Polyclonal Antibody (STJ110358) at dilution of 1:100 (40x lens). Blue: DAPI for nuclear staining.

This product is suitable for in-vitro studies under the RESEARCH USE ONLY [RUO] licence. This product must not be used as for diagnostic or other medical purposes.
St John's Laboratory Ltd, Knowledge Dock Business Centre, University Way, London, E16 2RD | Tel: 0208 223 3081