

Anti-POLR1D antibody (1-133) (STJ110327)

STJ110327

GENERAL INFORMATION

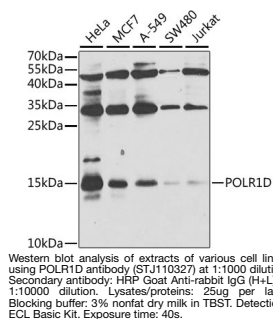
Product Type	Primary antibodies
Short Description	
Applications	WB/ELISA
Host/Source	Rabbit
Reactivity	Human

PRODUCT PROPERTIES

Clonality	Polyclonal
Clone ID	
Concentration	Lot specific
Conjugation	Unconjugated
Purification	Affinity purification
Dilution Range	WB:1:500-1:2000
	ELISA: Recommended starting concentration is 1 µg/mL. Please optimize the concentration based on your specific assay requirements.
Formulation	PBS with 0.02% Sodium Azide, 50% Glycerol, pH 7.3.
Isotype	IgG
Storage	Store at -20°C for up to 1 year from the date of receipt, and avoid repeat freeze-thaw cycles.
Instruction	

TARGET INFORMATION

Gene ID	51082
Gene Symbol	POLR1D
Uniprot ID	RPAC2_HUMAN RPC22_HUMAN
Immunogen	
Immunogen Region	1-133
Specificity	Recombinant fusion protein containing a sequence corresponding to amino acids 1-133 of human POLR1D (NP_057056.1).
Immunogen Sequence	MEEDQELERKISGLKTSMAE GERKTALEMVQAAGTDRHCV TFLVHEEDHTLGNLSRYMIM KNPEVEFCGYTTTHPSESKI NLRIQTRGTLPAVEPFQRLG NELMNVQHVLDKFEASIKD YKDQKASRNESTF



This product is suitable for in-vitro studies under the RESEARCH USE ONLY [RUO] licence. This product must not be used as for diagnostic or other medical purposes.
St John's Laboratory Ltd, Knowledge Dock Business Centre, University Way, London, E16 2RD | Tel: 0208 223 3081