

Anti-SOCS4 antibody (426-440) (STJ110310)

STJ110310

GENERAL INFORMATION

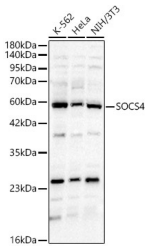
Product Type	Primary antibodies
Short Description	
Applications	WB/ELISA
Host/Source	Rabbit
Reactivity	Human/Mouse

PRODUCT PROPERTIES

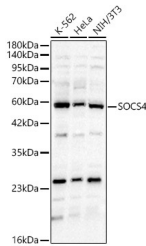
Clonality	Polyclonal
Clone ID	
Concentration	Lot specific
Conjugation	Unconjugated
Purification	Affinity purification
Dilution Range	WB:1:500-1:2000 ELISA:Recommended starting concentration is 1 Mu g/mL. Please optimize the concentration based on your specific assay requirements.
Formulation	PBS with 0.02% Sodium Azide, 50% Glycerol, pH 7.3.
Isotype	IgG
Storage Instruction	Store at -20°C for up to 1 year from the date of receipt, and avoid repeat freeze-thaw cycles.

TARGET INFORMATION

Gene ID	122809
Gene Symbol	SOCS4
Uniprot ID	SOCS4_HUMAN
Immunogen	
Immunogen Region	426-440
Specificity	A synthetic peptide corresponding to a sequence within amino acids 340-440 of human SOCS4 (NP_543143.1).
Immunogen Sequence	HNFSFDAHDPFCVHSPDITG LLEHYKDPSACMFFEPLLST PLIRTFPFSLQHCRTVICN CTTYDGIDALPIPSSMKLYL KEYHYKSKVRVLRIDAPEQQ C



Western blot analysis of extracts of various cell lines, using SOCS4 antibody (STJ110310) at 1:1000 dilution. Secondary antibody: HRP Goat Anti-rabbit IgG (H+L) at 1:10000 dilution. Lysates/proteins: 25ug per lane. Blocking buffer: 3% non-fat dry milk in TBST. Detection: ECL Basic Kit. Exposure time: 90s.



Western blot analysis of various lysates, using SOCS4 Rabbit polyclonal antibody (STJ110310) at 1:1000 dilution. Secondary antibody: HRP Goat Anti-Rabbit IgG (H+L) (STJ5000856) at 1:10000 dilution. Lysates/proteins: 25ug per lane. Blocking buffer: 3% nonfat dry milk in TBST. Detection: ECL Basic Kit. Exposure time: 30s.

This product is suitable for in-vitro studies under the RESEARCH USE ONLY [RUO] licence. This product must not be used as for diagnostic or other medical purposes.
St John's Laboratory Ltd, Knowledge Dock Business Centre, University Way, London, E16 2RD | Tel: 0208 223 3081