

Anti-ARHGEF9 antibody (307-516) (STJ110271)
STJ110271

GENERAL INFORMATION

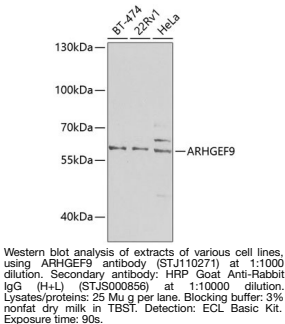
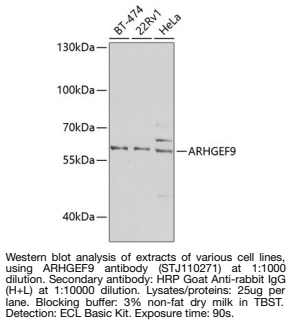
Product Type	Primary antibodies
Short Description	
Applications	WB/ELISA
Host/Source	Rabbit
Reactivity	Human/Mouse/Rat

PRODUCT PROPERTIES

Clonality	Polyclonal
Clone ID	
Concentration	Lot specific
Conjugation	Unconjugated
Purification	Affinity purification
Dilution	WB:1:500-1:2000
Range	ELISA:Recommended starting concentration is 1 Mu g/mL. Please optimize the concentration based on your specific assay requirements.
Formulation	PBS with 0.02% Sodium Azide, 50% Glycerol, pH 7.3.
Isotype	IgG
Storage	Store at-20°C for up to 1 year from the date of receipt, and avoid repeat freeze-thaw cycles.
Instruction	

TARGET INFORMATION

Gene ID	23229
Gene Symbol	ARHGEF9
Uniprot ID	ARHG9_HUMAN
Immunogen	
Immunogen Region	307-516
Specificity	Recombinant fusion protein containing a sequence corresponding to amino acids 307-516 of human ARHGEF9 (NP_056000.1).
Immunogen Sequence	WEGEDILDRSSELIYTGEMA WIYQPYGRNQQRVFFLFDHQ MVLCKDLIRRDILYYKGRI DMDKYEVVDIEDGRDDDFNV SMKNAFKLHNKETEEIHLFF AKKLEEKIRWLRAFREERKM VQEDEKIGFEISENQKRQAA MTRVKVPKQKGVNSARSVPP SYPPPDPLNHGQYLVPDGI AQSQVFETEPKRSQSPFWQ NFSRLTPFKK



This product is suitable for in-vitro studies under the RESEARCH USE ONLY [RUO] licence. This product must not be used as for diagnostic or other medical purposes.
St John's Laboratory Ltd, Knowledge Dock Business Centre, University Way, London, E16 2RD | Tel: 0208 223 3081