

Anti-PSPH antibody (1-225) (STJ110233)
STJ110233

GENERAL INFORMATION

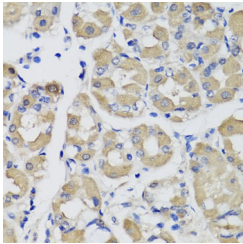
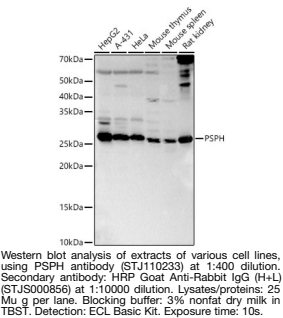
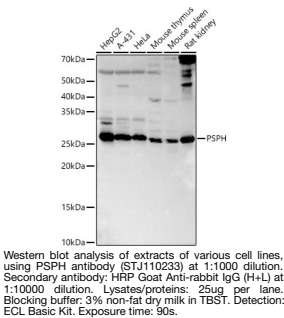
Product Type	Primary antibodies
Short Description	
Applications	WB/ELISA
Host/Source	Rabbit
Reactivity	Human/Mouse/Rat

PRODUCT PROPERTIES

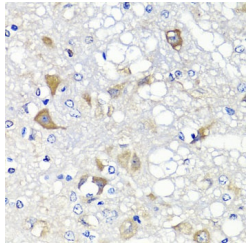
Clonality	Polyclonal
Clone ID	
Concentration	Lot specific
Conjugation	Unconjugated
Purification	Affinity purification
Dilution	WB:1:500-1:1000
Range	ELISA:Recommended starting concentration is 1 Mu g/mL. Please optimize the concentration based on your specific assay requirements.
Formulation	PBS with 0.02% Sodium Azide, 50% Glycerol, pH 7.3.
Isotype	IgG
Storage	Store at -20°C for up to 1 year from the date of receipt, and avoid repeat freeze-thaw cycles.
Instruction	

TARGET INFORMATION

Gene ID	5723
Gene Symbol	PSPH
Uniprot ID	SERB_HUMAN
Immunogen	
Immunogen Region	1-225
Specificity	Recombinant fusion protein containing a sequence corresponding to amino acids 1-225 of human PSPH (NP_004568.2).
Immunogen Sequence	MVSHSELRLFYSDAVCFD VDSTVIREEGIDELAKICGV EDAVSEMTRRAMGGAVPFKA ALTERLALIQPSREQVQRLI AEQPPHLTPGIRELVSRLQE RNVQVFLISGGFRSIVEHVA SKLNIPATNVFANRLKFYFN GEYAGFDETQPTAESGGKGK VKLLKKEKHFHKKIIMIGDG ATDMEACPPADAFIGFGGNV IRQVQKDNAKWYITDFVELL GELEE



Immunohistochemistry of paraffin-embedded human stomach using PSPH antibody (STJ110233) at dilution of 1:100 (40x lens).



Immunohistochemistry of paraffin-embedded rat brain using PSPH antibody (STJ110233) at dilution of 1:100 (40x lens).

This product is suitable for in-vitro studies under the RESEARCH USE ONLY [RUO] licence. This product must not be used as for diagnostic or other medical purposes.
St John's Laboratory Ltd, Knowledge Dock Business Centre, University Way, London, E16 2RD | Tel: 0208 223 3081