

Anti-MTX1 antibody (186-435) (STJ110221)
STJ110221

GENERAL INFORMATION

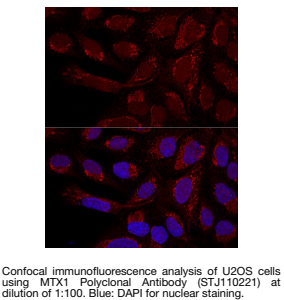
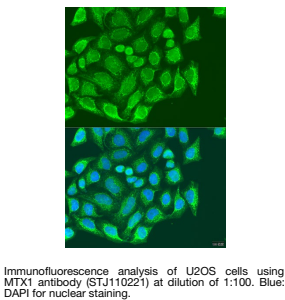
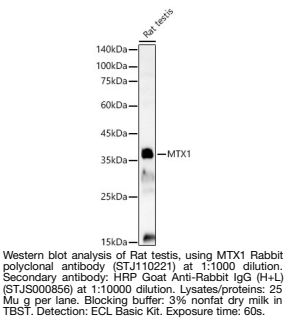
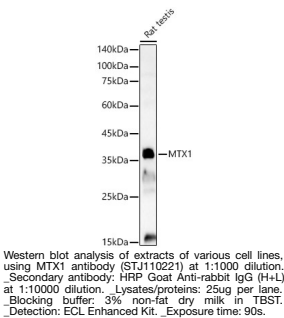
Product Type	Primary antibodies
Short Description	
Applications	WB/ELISA
Host/Source	Rabbit
Reactivity	Human/Mouse/Rat

PRODUCT PROPERTIES

Clonality	Polyclonal
Clone ID	
Concentration	Lot specific
Conjugation	Unconjugated
Purification	Affinity purification
Dilution	WB:1:500-1:1000
Range	ELISA:Recommended starting concentration is 1 Mu g/mL. Please optimize the concentration based on your specific assay requirements.
Formulation	PBS with 0.02% Sodium Azide, 50% Glycerol, pH 7.3.
Isotype	IgG
Storage	Store at -20°C for up to 1 year from the date of receipt, and avoid repeat freeze-thaw cycles.
Instruction	

TARGET INFORMATION

Gene ID	4580
Gene Symbol	MTX1
Uniprot ID	MTX1_HUMAN
Immunogen	
Immunogen Region	186-435
Specificity	Recombinant fusion protein containing a sequence corresponding to amino acids 186-435 of human MTX1 (NP_942584.2).
Immunogen Sequence	LKVHKISNPWQSPSGTLPAL RTSHGEVISVPHKIITHLRK EVHTFWIDTKNYVEVTRKWY AEAMPFPLNFFLPGRMQRQY MERLQLLTGEHRPEDEEELE KELYREARECLTLLSQRLGS QKFFFGDAPASLDAFVFSYL ALLLQAKLP SGK LQVHLRGL HNLCAVCTHILSLYFPWDGA EVPPQRQTPAGPETEEEPYR RRNQILSVLAGLAAMVG YAL LSGIVSIQRATPARAPGTR



This product is suitable for in-vitro studies under the RESEARCH USE ONLY [RUO] licence. This product must not be used as for diagnostic or other medical purposes.
St John's Laboratory Ltd, Knowledge Dock Business Centre, University Way, London, E16 2RD | Tel: 0208 223 3081