

Anti-KRT10 antibody (350-460) (STJ110217)

STJ110217

GENERAL INFORMATION

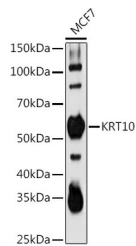
Product Type	Primary antibodies
Short Description	
Applications	WB/ELISA
Host/Source	Rabbit
Reactivity	Human

PRODUCT PROPERTIES

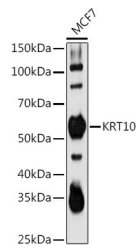
Clonality	Polyclonal
Clone ID	
Concentration	Lot specific
Conjugation	Unconjugated
Purification	Affinity purification
Dilution Range	WB:1:500-1:1000 ELISA:Recommended starting concentration is 1 Mu g/mL. Please optimize the concentration based on your specific assay requirements.
Formulation	PBS with 0.05% Proclin300, 50% Glycerol, pH 7.3.
Isotype	IgG
Storage	Store at -20°C for up to 1 year from the date of receipt, and avoid repeat freeze-thaw cycles.
Instruction	

TARGET INFORMATION

Gene ID	3858
Gene Symbol	KRT10
Uniprot ID	K1C10_HUMAN
Immunogen	
Immunogen Region	350-460
Specificity	A synthetic peptide corresponding to a sequence within amino acids 350-460 of human KRT10 (NP_000412.3).
Immunogen Sequence	EIDNNIEQISSYKSEITELR RNVQALEIELQSQLALKQSL EASLAETEGRYCVQLSQIQA QISALEEQQQIRAEETECQN TEYQQLLDIKIRLENIQTY RSLLEGEGSSG



Western blot analysis of extracts of MCF7 cells, using KRT10 antibody (STJ110217) at 1:1000 dilution. Secondary antibody: HRP Goat Anti-rabbit IgG (H+L) at 1:10000 dilution. Lysates/proteins: 25ug per lane. Blocking buffer: 3% non-fat dry milk in TBST. Detection: ECL Basic Kit. Exposure time: 180s.



Western blot analysis of extracts of MCF7 cells, using KRT10 antibody (STJ110217) at 1:1000 dilution. Secondary antibody: HRP Goat Anti-Rabbit IgG (H+L) (STJ5000856) at 1:10000 dilution. Lysates/proteins: 25 Mu g per lane. Blocking buffer: 3% nonfat dry milk in TBST. Detection: ECL Basic Kit. Exposure time: 180s.

This product is suitable for in-vitro studies under the RESEARCH USE ONLY [RUO] licence. This product must not be used as for diagnostic or other medical purposes.
St John's Laboratory Ltd, Knowledge Dock Business Centre, University Way, London, E16 2RD | Tel: 0208 223 3081