

Anti-ADAR antibody (212-228) (STJ110179)

GENERAL INFORMATION

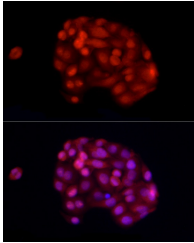
Product Type	Primary antibodies
Short Description	
Applications	WB/IHC-P/IF/ICC/ELISA
Host/Source	Rabbit
Reactivity	Human/Mouse/Rat

PRODUCT PROPERTIES

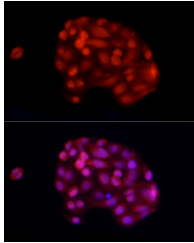
Clonality	Polyclonal
Clone ID	
Concentration	Lot specific
Conjugation	Unconjugated
Purification	Affinity purification
Dilution	WB:1:500-1:1000
Range	IHC-P:1:50-1:200 IF/ICC:1:50-1:200 ELISA:Recommended starting concentration is 1 μ g/mL. Please optimize the concentration based on your specific assay requirements.
Formulation	PBS with 0.02% Sodium Azide, 50% Glycerol, pH 7.3.
Isotype	IgG
Storage	Store at -20°C for up to 1 year from the date of receipt, and avoid repeat freeze-thaw cycles.
Instruction	

TARGET INFORMATION

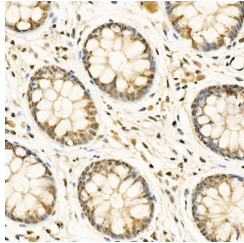
Gene ID	103
Gene Symbol	ADAR
Uniprot ID	DSRAD_HUMAN
Immunogen	
Immunogen Region	212-228
Specificity	A synthetic peptide corresponding to a sequence within amino acids 200-299 of human ADAR11 (NP_001102.2).
Immunogen Sequence	STQAWNQHSGVVRPDGHSQG APNSDPSLEPEDRNSTSVSE DLLEPFIAVSAQAWNQHSGV VRPDSHSQGGSPNSDPGLEPE DSNSTSALEDPLEFLDMAEI KEKICDYLFNVSDSSALNLA KNIGLTKARDINAVLIDMER QGDVYRQGTTPPIWHLTDKK RERMQIKRNTNSVPETAPAA IPETKRNAEFLTCNIPTNSNA SNNMVTTEKVENGGQEPVIKL ENRQEAREPEPARLKPVHY



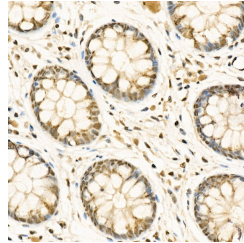
Western blot analysis of extracts of various cell lines, using ADAR11 rabbit polyclonal antibody (STJ110179) at 1:1000 dilution. Secondary antibody: HRP Goat Anti-rabbit IgG (H+L) at 1:10000 dilution. Lysates/proteins: 25ug per lane. Blocking buffer: 3% non-fat dry milk in TBST. Detection: ECL Basic kit. Exposure time: 10s.



Immunofluorescence analysis of HepG2 cells using ADAR1 Rabbit polyclonal antibody (STJ110179) at dilution of 1:50 (40x lens). Blue: DAPI for nuclear staining.



Immunohistochemistry of paraffin-embedded rat spleen using ADAR11 antibody (STJ110179) at dilution of 1:100 (40x lens). Perform microwave antigen retrieval with 10 mM PBS buffer pH 7.2 before commencing with immunohistochemistry staining protocol.



Immunohistochemistry analysis of paraffin-embedded human colon using ADAR1 Rabbit polyclonal antibody (STJ110179) at dilution of 1:50 (40x lens). Perform high pressure antigen retrieval with 10 mM citrate buffer pH 6.0 before commencing with immunohistochemistry staining protocol.

This product is suitable for in-vitro studies under the RESEARCH USE ONLY [RUO] licence. This product must not be used as for diagnostic or other medical purposes.
St John's Laboratory Ltd, Knowledge Dock Business Centre, University Way, London, E16 2RD | Tel: 0208 223 3081