

Anti-RBFOX1 antibody (1-130) (STJ110121)

STJ110121

GENERAL INFORMATION

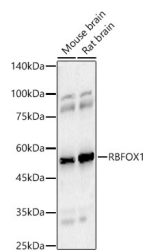
Product Type	Primary antibodies
Short Description	
Applications	WB/IF/ICC/ELISA
Host/Source	Rabbit
Reactivity	Human/Mouse/Rat

PRODUCT PROPERTIES

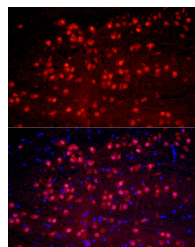
Clonality	Polyclonal
Clone ID	
Concentration	Lot specific
Conjugation	Unconjugated
Purification	Affinity purification
Dilution Range	WB:1:500-1:1000 IF/ICC:1:50-1:200 ELISA:Recommended starting concentration is 1 Mu g/mL. Please optimize the concentration based on your specific assay requirements.
Formulation	PBS with 0.05% Proclin300, 50% Glycerol, pH 7.3.
Isotype	IgG
Storage Instruction	Store at -20°C for up to 1 year from the date of receipt, and avoid repeat freeze-thaw cycles.

TARGET INFORMATION

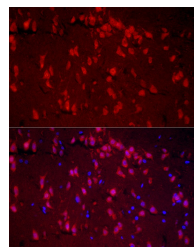
Gene ID	54715
Gene Symbol	RBFOX1
Uniprot ID	RFOX1_HUMAN
Immunogen	
Immunogen Region	1-130
Specificity	Recombinant fusion protein containing a sequence corresponding to amino acids 1-130 of human RBFOX1 (NP_665900.1).
Immunogen Sequence	MLASQGVLLHPYGVPMIVPA APYLPGLIQGNQEAAAAPDT MAQPYASAQFAPPQNGIPAE YTAPHPHPAPEYTGQTTVPE HTLNLYPPAQTHSEQSPADT SAQTVSGTATQTDDAAPTDG QPQTQPSNT



Western blot analysis of various lysates, using RBFOX1 antibody (STJ110121) at 1:800 dilution. Secondary antibody: HRP Goat Anti-rabbit IgG (H+L) (STJ5000856) at 1:10000 dilution. Lysates/proteins: 25 Mu g per lane. Blocking buffer: 3% non-fat dry milk in TBST. Detection: ECL Basic Kit. Exposure time: 60s.



Immunofluorescence analysis of mouse brain cells using RBFOX1 rabbit polyclonal antibody (STJ110121) at dilution of 1:50 (40x lens). Blue: DAPI for nuclear staining.



Immunofluorescence analysis of rat brain cells using RBFOX1 rabbit polyclonal antibody (STJ110121) at dilution of 1:50 (40x lens). Blue: DAPI for nuclear staining.

This product is suitable for in-vitro studies under the RESEARCH USE ONLY [RUO] licence. This product must not be used as for diagnostic or other medical purposes.
St John's Laboratory Ltd, Knowledge Dock Business Centre, University Way, London, E16 2RD | Tel: 0208 223 3081