

Anti-RPL36 antibody (1-105) (STJ110103)

STJ110103

GENERAL INFORMATION

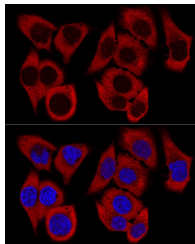
| | |
|--------------------------|-----------------------|
| Product Type | Primary antibodies |
| Short Description | |
| Applications | WB/IHC-P/IF/ICC/ELISA |
| Host/Source | Rabbit |
| Reactivity | Human/Mouse/Rat |

PRODUCT PROPERTIES

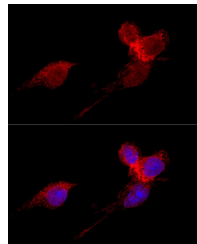
| | |
|-----------------------|---|
| Clonality | Polyclonal |
| Clone ID | |
| Concentration | Lot specific |
| Conjugation | Unconjugated |
| Purification | Affinity purification |
| Dilution Range | WB:1:500-1:2000 IHC-P:1:50-1:200 IF/ICC:1:50-1:200 ELISA:Recommended starting concentration is 1 µg/mL. Please optimize the concentration based on your specific assay requirements. |
| Formulation | PBS with 0.02% Sodium Azide, 50% Glycerol, pH 7.3. |
| Isotype | IgG |
| Storage | Store at -20°C for up to 1 year from the date of receipt, and avoid repeat freeze-thaw cycles. |
| Instruction | |

TARGET INFORMATION

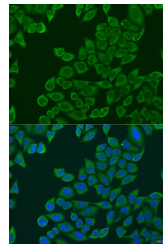
| | |
|---------------------------|---|
| Gene ID | 25873 |
| Gene Symbol | RPL36 |
| Uniprot ID | RL36_HUMAN |
| Immunogen | |
| Immunogen Region | 1-105 |
| Specificity | Recombinant fusion protein containing a sequence corresponding to amino acids 1-105 of human RPL36 (NP_056229.2). |
| Immunogen Sequence | MALRYPMAVGLNKGHKVTKN VSKPRHSRRRGRLTKHTKFV RDMIREVCGFAPYERRAMEL LKVSCKDKRALFKIKRVGTH IRAKRKREELSNVLAAMRKA AAKKD |



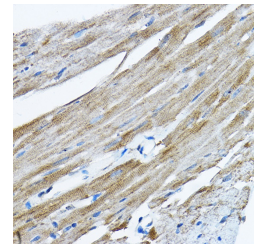
Confocal immunofluorescence analysis of HeLa cells using RPL36 Polyclonal Antibody (STJ110103) at dilution of 1:200. Blue: DAPI for nuclear staining.



Confocal immunofluorescence analysis of HeLa cells using RPL36 antibody (STJ110103) at dilution of 1:200. Blue: DAPI for nuclear staining.



Immunofluorescence analysis of U2OS cells using RPL36 antibody (STJ110103) at dilution of 1:100. Blue: DAPI for nuclear staining.



Immunohistochemistry analysis of paraffin-embedded mouse heart using RPL36 Rabbit polyclonal antibody (STJ110103) at dilution of 1:200 (40x lens). Perform high pressure antigen retrieval with 10 mM citrate buffer pH 6.0 before commencing with immunohistochemistry staining protocol.

This product is suitable for in-vitro studies under the RESEARCH USE ONLY [RUO] licence. This product must not be used as for diagnostic or other medical purposes.
St John's Laboratory Ltd, Knowledge Dock Business Centre, University Way, London, E16 2RD | Tel: 0208 223 3081