

Anti-SUZ12 antibody (470-739) (STJ110096)
STJ110096

GENERAL INFORMATION

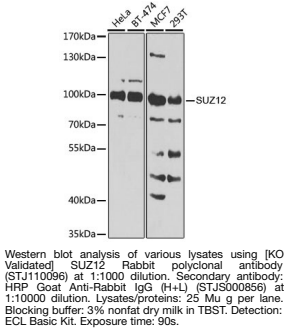
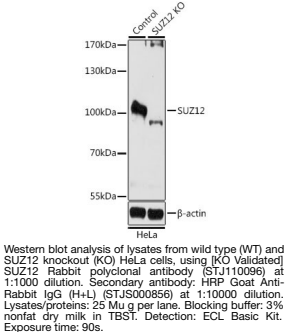
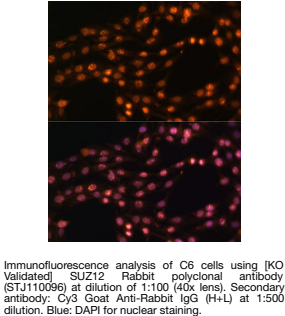
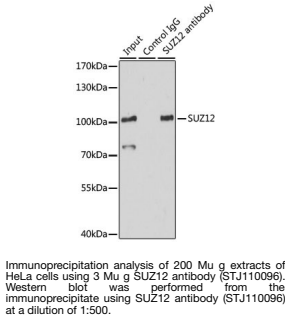
Product Type	Primary antibodies
Short Description	
Applications	WB/IF/ICC/IP/ELISA
Host/Source	Rabbit
Reactivity	Human/Mouse/Rat

PRODUCT PROPERTIES

Clonality	Polyclonal
Clone ID	
Concentration	Lot specific
Conjugation	Unconjugated
Purification	Affinity purification
Dilution	WB:1:500-1:2000
Range	IF/CC:1:50-1:100 IP:0.5 Mu g-4 Mu g antibody for 200 Mu g-400 Mu g extracts of whole cells ELISA:Recommended starting concentration is 1 Mu g/mL. Please optimize the concentration based on your specific assay requirements
Formulation	PBS with 0.02% Sodium Azide, 50% Glycerol, pH 7.3.
Isotype	IgG
Storage	Store at-20°C for up to 1 year from the date of receipt, and avoid repeat freeze-thaw cycles.
Instruction	

TARGET INFORMATION

Gene ID	23512
Gene Symbol	SUZ12
Uniprot ID	SUZ12_HUMAN
Immunogen	
Region	470-739
Specificity	Recombinant fusion protein containing a sequence corresponding to amino acids 470-739 of human SUZ12 (NP_056170.2). CHSRFIFNYVYHPKGARIDV SINECYDGSYAGNPQDIHRQ PGFAFSRNGPVKRTPTITHL VCRPKRTKASMSEFLESEDG EVEQQRTYSSGHNRLYFHSD TCLPLRPQEMEVDSEDEKDP EWLREKTTITQIEEFSVDVNEG EKEVMKLWNLHVMKHGFIAD NQMNHACMLFVENYGGKIIK KNLCRNFMHLHLSMHDFNLI SIMSIDKAVTKLREMQQKLE KGESASPANEEITEEQNGT
Immunogen Sequence	



This product is suitable for in-vitro studies under the RESEARCH USE ONLY [RUO] licence. This product must not be used as for diagnostic or other medical purposes.
St John's Laboratory Ltd, Knowledge Dock Business Centre, University Way, London, E16 2RD | Tel: 0208 223 3081