

## Anti-CFHR3 antibody (80-200) (STJ110086)

STJ110086

### GENERAL INFORMATION

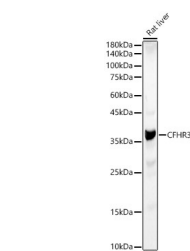
<b>Product Type</b>	Primary antibodies
<b>Short Description</b>	
<b>Applications</b>	WB/IF/ICC/ELISA
<b>Host/Source</b>	Rabbit
<b>Reactivity</b>	Human/Mouse/Rat

### PRODUCT PROPERTIES

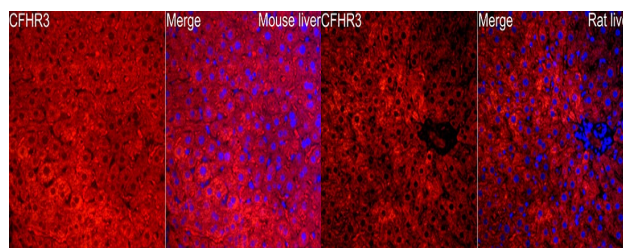
<b>Clonality</b>	Polyclonal
<b>Clone ID</b>	
<b>Concentration</b>	Lot specific
<b>Conjugation</b>	Unconjugated
<b>Purification</b>	Affinity purification
<b>Dilution Range</b>	WB:1:500-1:1000 IF/ICC:1:50-1:200 ELISA:Recommended starting concentration is 1 $\mu$ g/mL. Please optimize the concentration based on your specific assay requirements.
<b>Formulation</b>	PBS with 0.02% Sodium Azide, 50% Glycerol, pH 7.3.
<b>Isotype</b>	IgG
<b>Storage Instruction</b>	Store at -20°C for up to 1 year from the date of receipt, and avoid repeat freeze-thaw cycles.

### TARGET INFORMATION

<b>Gene ID</b>	10878
<b>Gene Symbol</b>	CFHR3
<b>Uniprot ID</b>	FHR3_HUMAN
<b>Immunogen</b>	
<b>Immunogen Region</b>	80-200
<b>Specificity</b>	Recombinant fusion protein containing a sequence corresponding to amino acids 80-200 of human CFHR3 (NP_066303.2).
<b>Immunogen Sequence</b>	AVPCLRKCYPYLENGYNQN YGRKFVQGNSTEVACHPGYG LPKAQTTVTCTEKGWSPTPR CIRVRTCSKSDIEIENGFS ESSSIYILNKEIQYKCKPGY ATADGNSSGSITCLQNGWSA Q



Western blot analysis of Rat liver, using CFHR3 rabbit polyclonal antibody (STJ110086) at 1:1000 dilution. Secondary antibody: HRP Goat Anti-rabbit IgG (H+L) (STJS000856) at 1:10000 dilution. Lysates/proteins: 25  $\mu$ g per lane. Blocking buffer: 3% non-fat dry milk in TBST. Detection: ECL Basic Kit. Exposure time: 30s.



Perform high pressure antigen retrieval with 10 mM citrate buffer pH 6.0 before commencing with IF staining protocol. Immunofluorescence analysis of mouse liver cells using CFHR3 rabbit polyclonal antibody (STJ110086) at dilution of 1:200 (40x lens). Blue: DAPI for nuclear staining.

Perform high pressure antigen retrieval with 10 mM citrate buffer pH 6.0 before commencing with IF staining protocol. Immunofluorescence analysis of rat liver cells using CFHR3 rabbit polyclonal antibody (STJ110086) at dilution of 1:200 (40x lens). Blue: DAPI for nuclear staining.

This product is suitable for in-vitro studies under the RESEARCH USE ONLY [RUO] licence. This product must not be used as for diagnostic or other medical purposes.  
St John's Laboratory Ltd, Knowledge Dock Business Centre, University Way, London, E16 2RD | Tel: 0208 223 3081