

Anti-MAPK11 antibody (264-364) (STJ110028)  
STJ110028

GENERAL INFORMATION

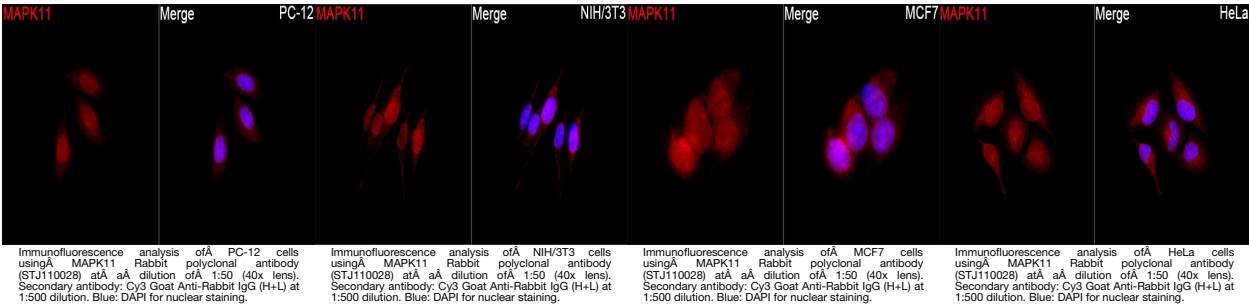
Product Type	Primary antibodies
Short Description	
Applications	WB/IF/ICC/ELISA
Host/Source	Rabbit
Reactivity	Human/Mouse/Rat

PRODUCT PROPERTIES

Clonality	Polyclonal
Clone ID	
Concentration	Lot specific
Conjugation	Unconjugated
Purification	Affinity purification
Dilution Range	WB:1:500-1:2000 IF/ICC:1:50-1:200 ELISA:Recommended starting concentration is 1 Mu g/mL. Please optimize the concentration based on your specific assay requirements.
Formulation	PBS with 0.02% Sodium Azide, 50% Glycerol, pH 7.3.
Isotype	IgG
Storage	Store at -20°C for up to 1 year from the date of receipt, and avoid repeat freeze-thaw cycles.
Instruction	

TARGET INFORMATION

Gene ID	5600
Gene Symbol	MAPK11
Uniprot ID	MK11_HUMAN
Immunogen	
Immunogen Region	264-364
Specificity	A synthetic peptide corresponding to a sequence within amino acids 264-364 of human MAPK11 (NP_002742.3). PMPQKDLSSIFRGANPLAID LLGRMLVLDSQQRVSAEAL AHAYFSQYHDPEDPEPEAPY DESVEAKERTLEEWKELTYQ
Immunogen Sequence	EVLSFKPPEPPKPPGSLEIE Q



This product is suitable for in-vitro studies under the RESEARCH USE ONLY [RUO] licence. This product must not be used as for diagnostic or other medical purposes.  
St John's Laboratory Ltd, Knowledge Dock Business Centre, University Way, London, E16 2RD | Tel: 0208 223 3081