

Anti-LOX antibody (300-417) (STJ110011)
STJ110011

GENERAL INFORMATION

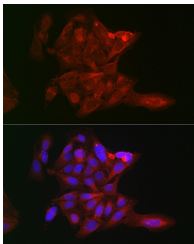
Product Type	Primary antibodies
Short Description	
Applications	WB/IHC-P/IF/ICC/ELISA
Host/Source	Rabbit
Reactivity	Human/Mouse/Rat

PRODUCT PROPERTIES

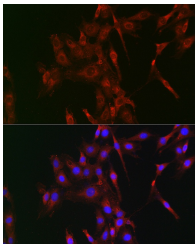
Clonality	Polyclonal
Clone ID	
Concentration	Lot specific
Conjugation	Unconjugated
Purification	Affinity purification
Dilution Range	WB:1:100-1:500 IHC-P:1:50-1:200 IF/ICC:1:50-1:200 ELISA:Recommended starting concentration is 1 Mu g/mL. Please optimize the concentration based on your specific assay requirements.
Formulation	PBS with 0.05% Proclin300, 50% Glycerol, pH 7.3.
Isotype	IgG
Storage	Store at -20°C for up to 1 year from the date of receipt, and avoid repeat freeze-thaw cycles.
Instruction	

TARGET INFORMATION

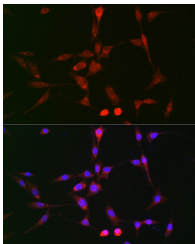
Gene ID	4015
Gene Symbol	LOX
Uniprot ID	LYOX_HUMAN
Immunogen	
Immunogen Region	300-417
Specificity	Recombinant fusion protein containing a sequence corresponding to amino acids 300-400 of human LOX (NP_002308.2).
Immunogen Sequence	EFSHYDLLDANTQRRVAEGH KASFLEDTS CDYGYHRRFA CTAHTQGLSPGCDYTGADI DCQWIDITDVKPGNYILKVS VNPSYLPESDYTNVVRCD I



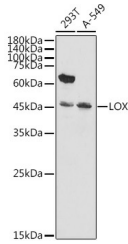
Immunofluorescence analysis of U-2 OS cells using LOX Rabbit polyclonal antibody (STJ110011) at dilution of 1:100 (40x lens). Blue: DAPI for nuclear staining.



Immunofluorescence analysis of C6 cells using LOX Rabbit polyclonal antibody (STJ110011) at dilution of 1:100 (40x lens). Blue: DAPI for nuclear staining.



Immunofluorescence analysis of BALB-3T3 cells using LOX Rabbit polyclonal antibody (STJ110011) at dilution of 1:100 (40x lens). Blue: DAPI for nuclear staining.



Western blot analysis of extracts of various cell lines, using LOX antibody (STJ110011) at 1:500 dilution. Secondary antibody: HRP Goat Anti-Rabbit IgG (H+L) (STJS000856) at 1:10000 dilution. Lysates/proteins: 25 Mu g per lane. Blocking buffer: 3% nonfat dry milk in TBST. Detection: ECL Basic Kit. Exposure time: 90s.

This product is suitable for in-vitro studies under the RESEARCH USE ONLY [RUO] licence. This product must not be used as for diagnostic or other medical purposes.
St John's Laboratory Ltd, Knowledge Dock Business Centre, University Way, London, E16 2RD | Tel: 0208 223 3081